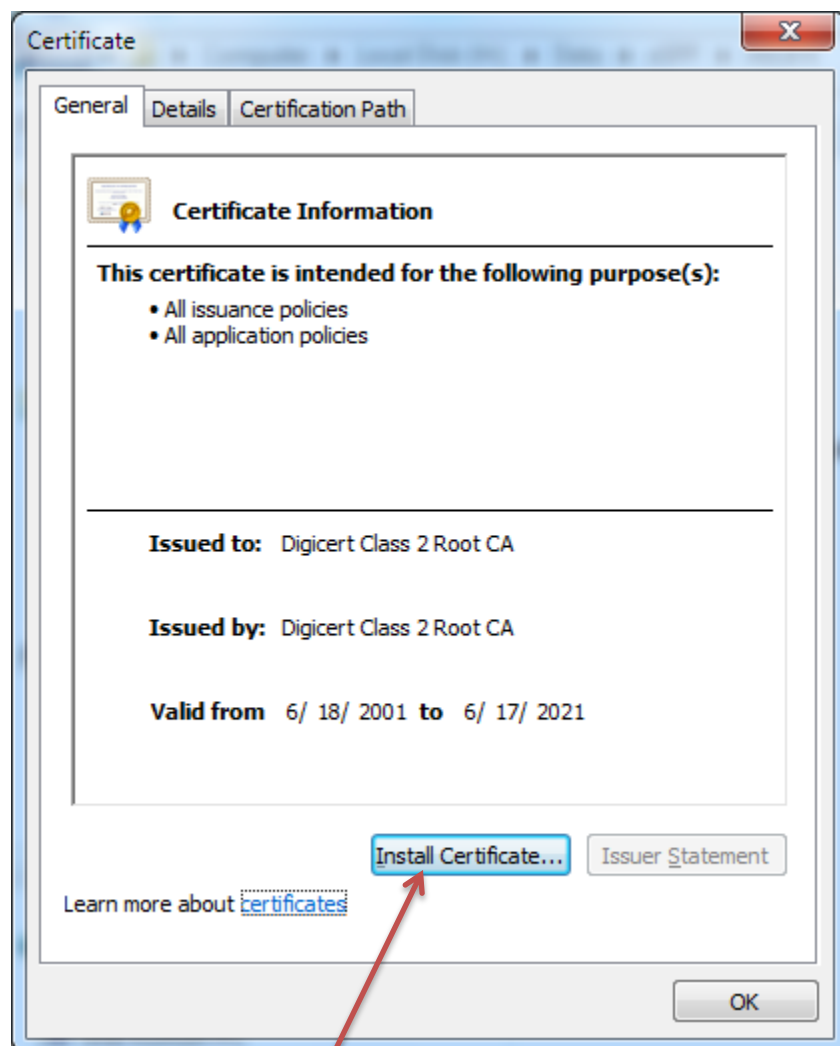
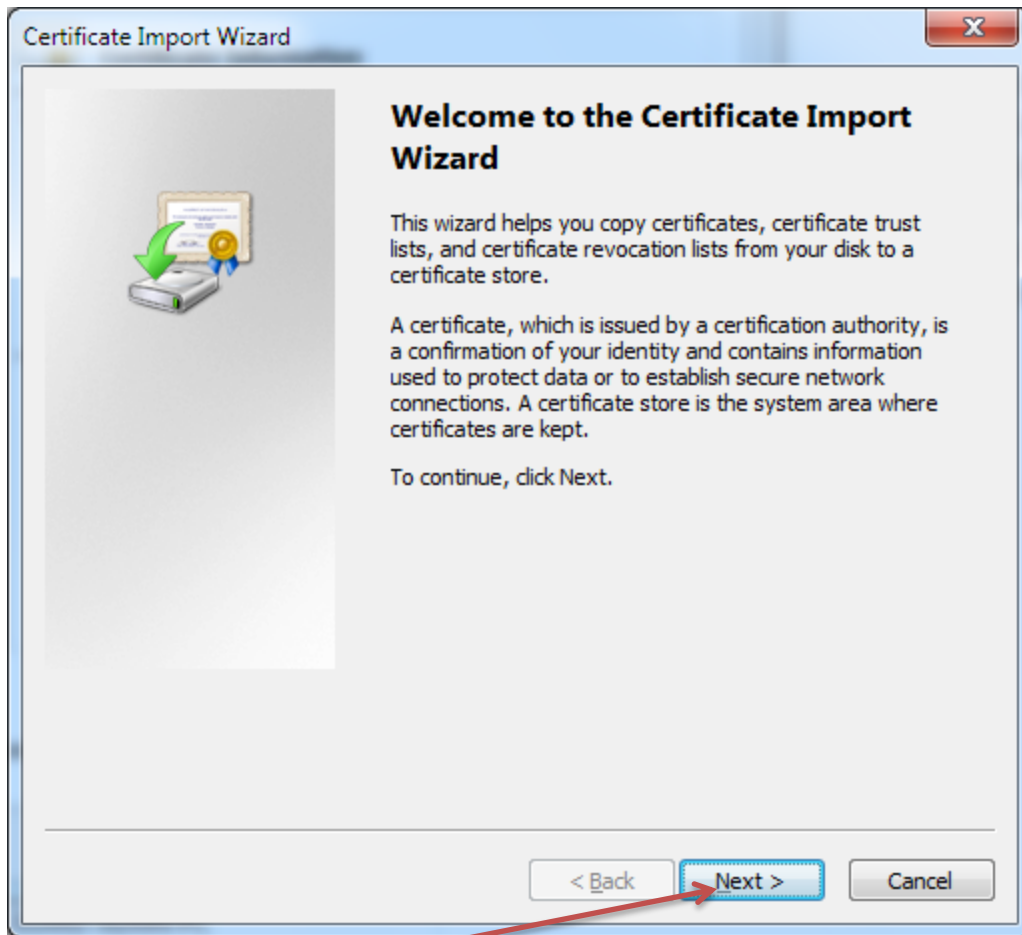


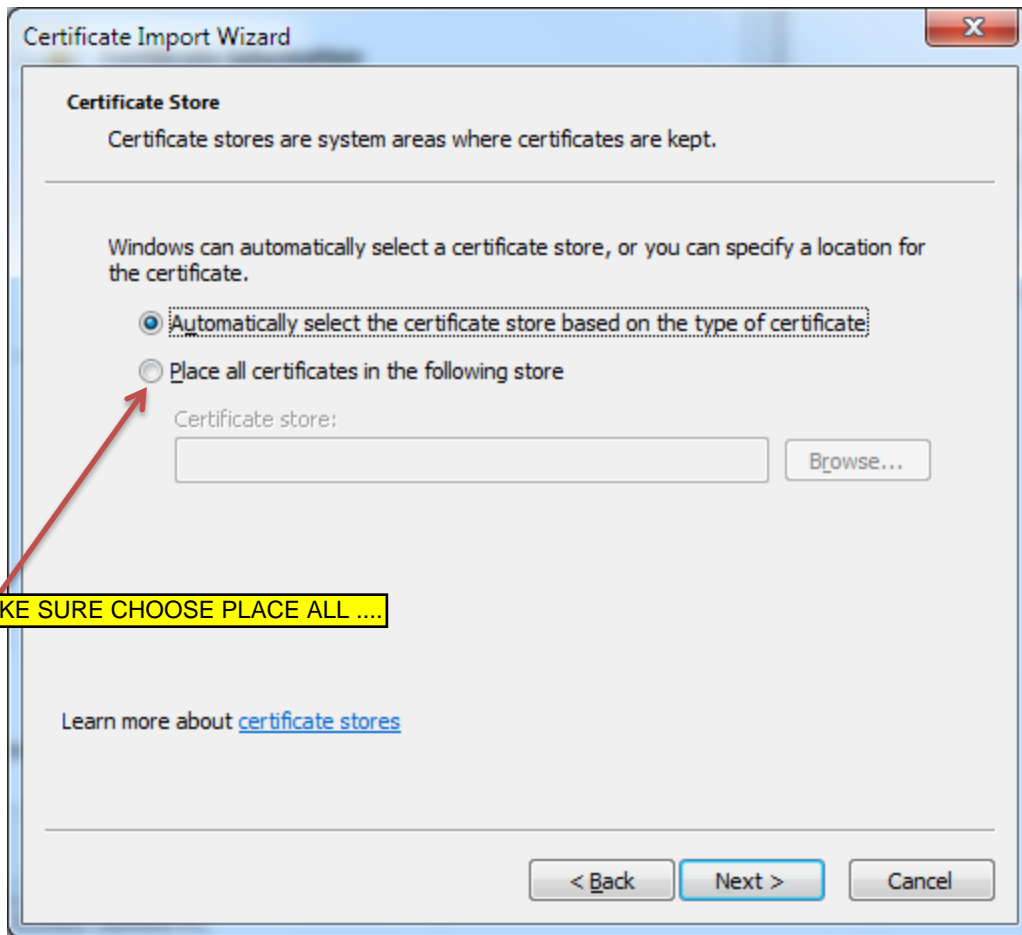
STEP 2: Install Digisign (IDBasic)



Click Install Certificate

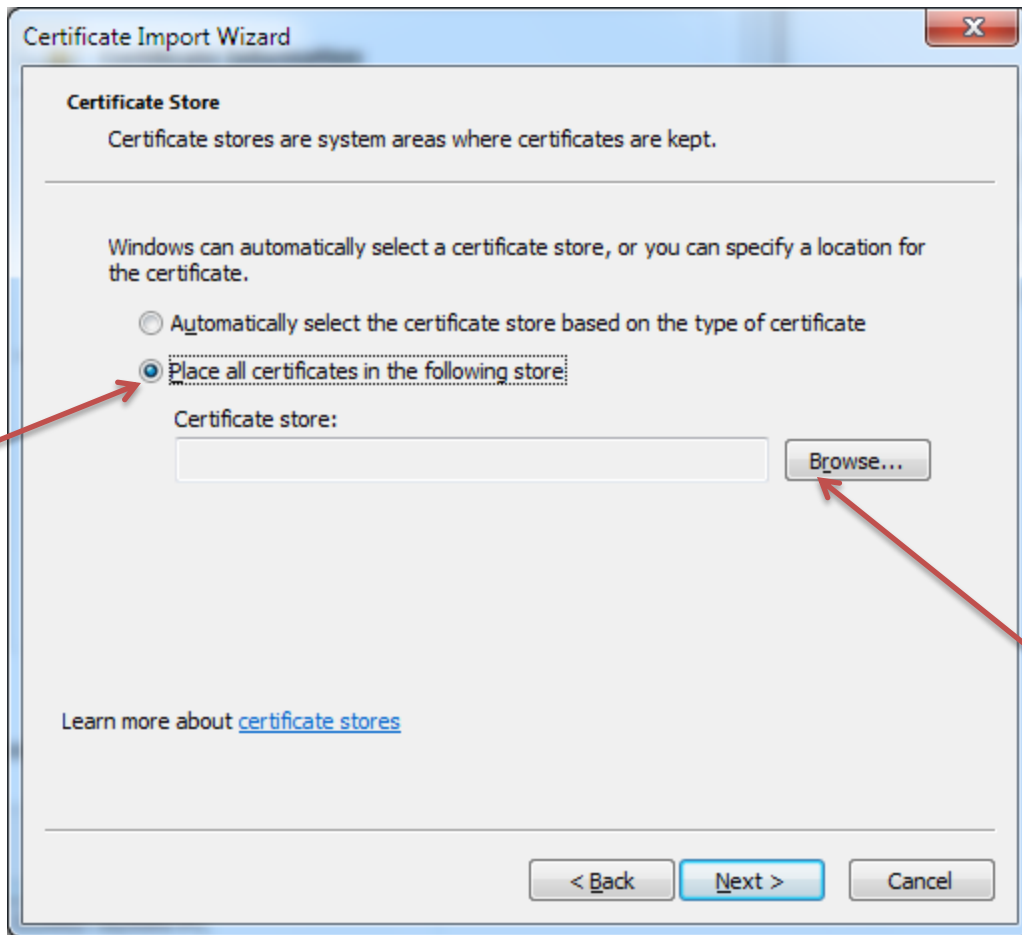


Click Next

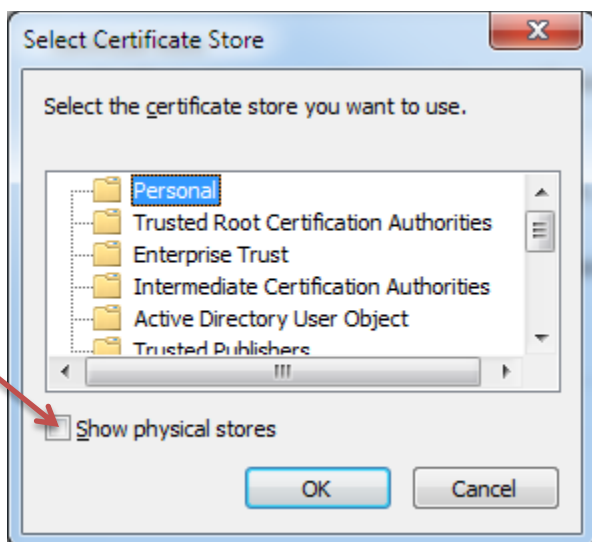


MAKE SURE CHOOSE PLACE ALL ...

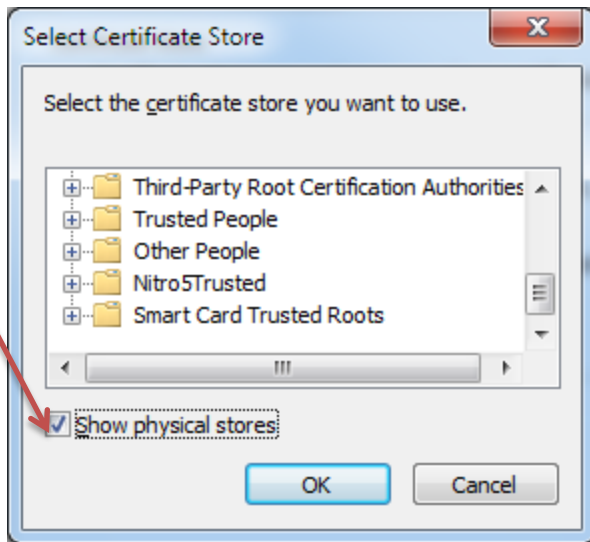
Click Radio Button : Place all certificate in the following store



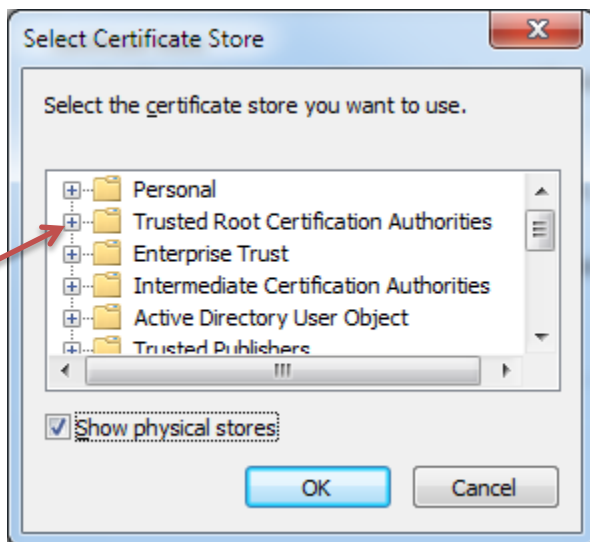
Click Browse



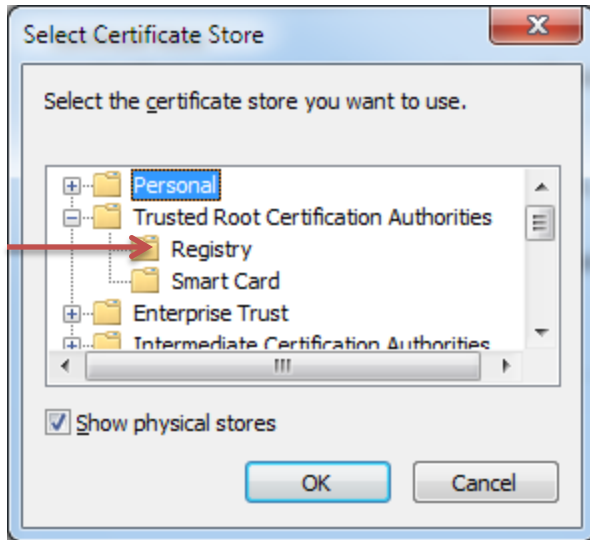
Tick Square Box: Show physical stores



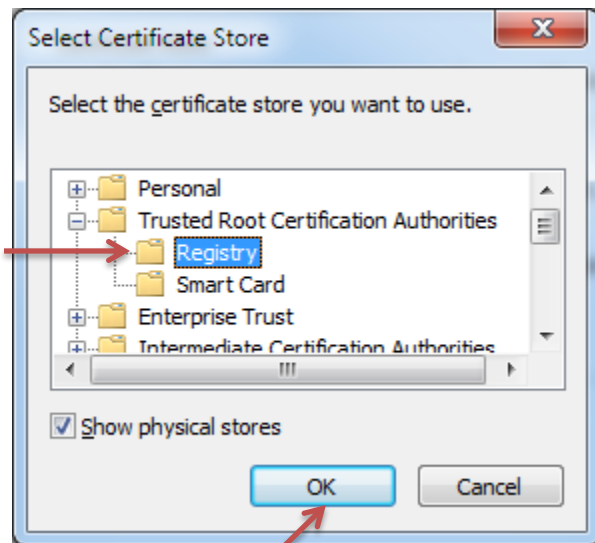
Scroll Up-Down then choose Trusted Root Certification Authorities



Click symbol + box: Trusted Root Certification Authorities

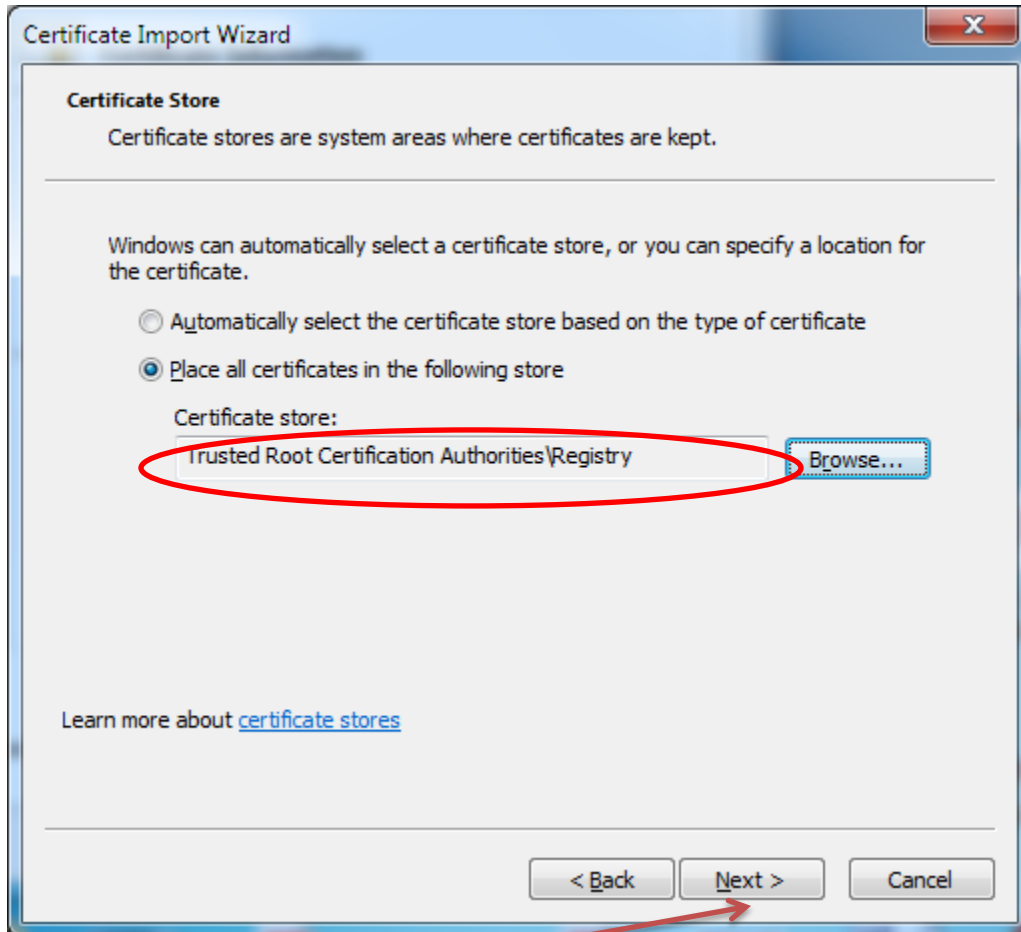


Click Registry – Submenu of Trusted Root Certification Authorities

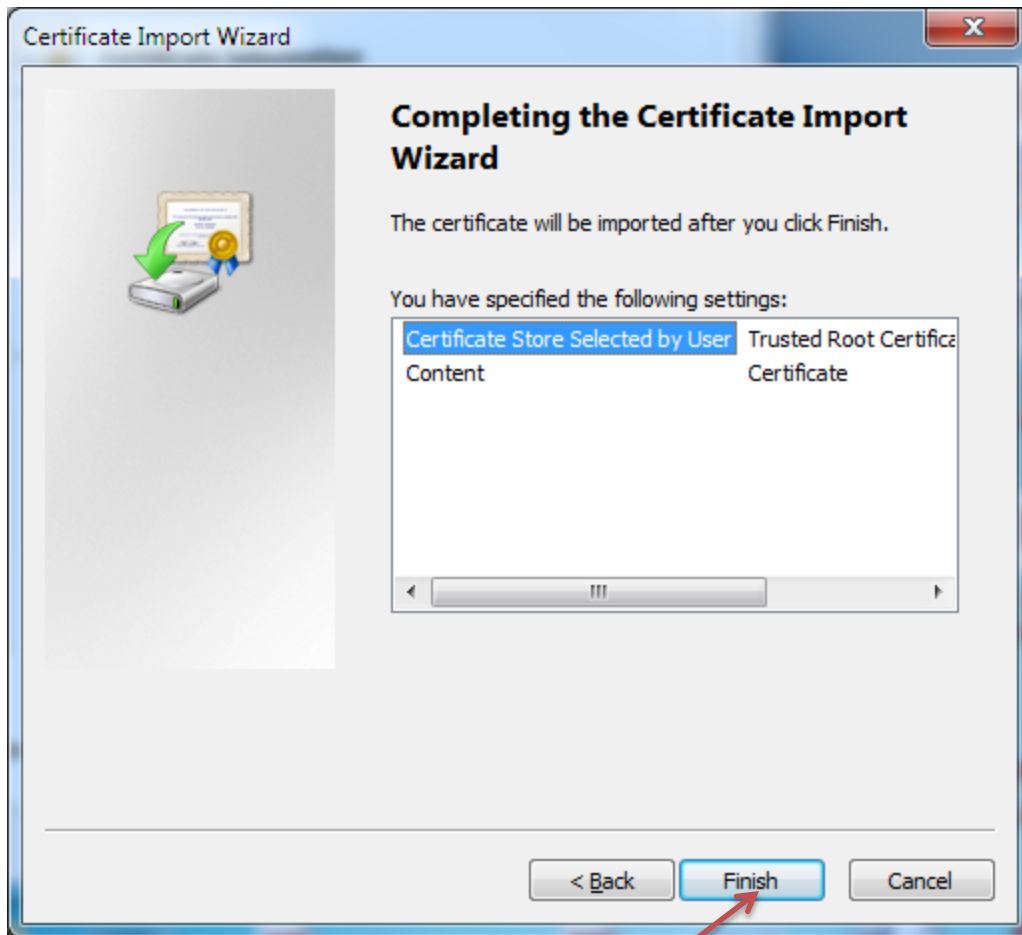


Click Button OK

Klik OK



Klik Next



Klik Finish

